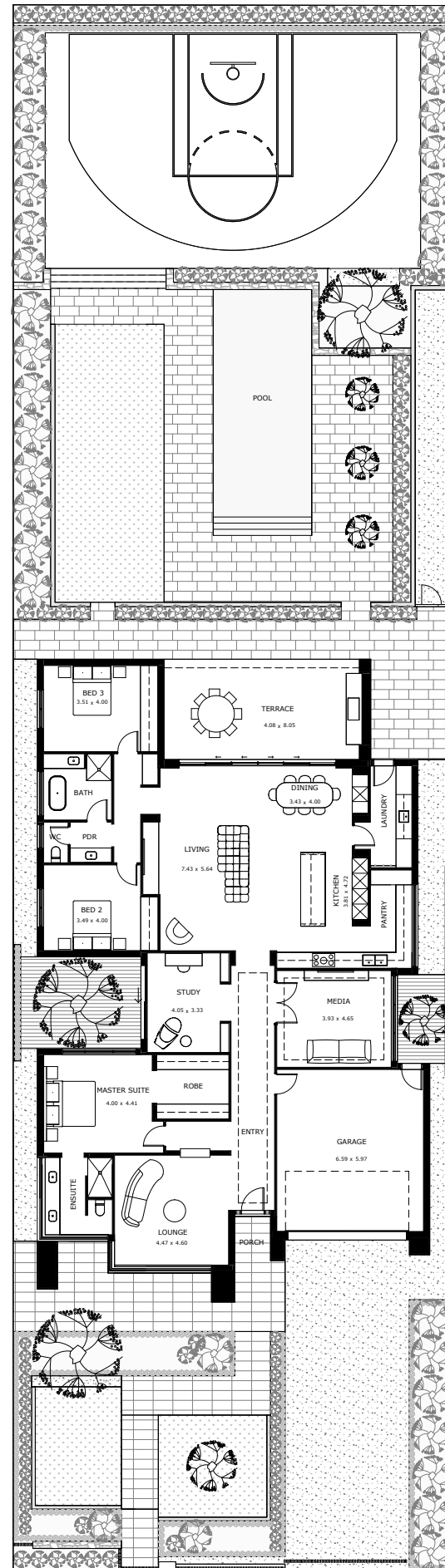


## A THOUGHTFUL LINEAR DESIGN

The floor plan has a clear definition of spaces, with a fluid connection between those spaces. This creates an open feeling throughout the home, which is continued with the strategic use of courtyards and wide, glazed openings, maximizing natural light and encouraging the connection between inside and out.

<b>TOTAL</b>	353sqm
<b>WIDTH</b>	15.95m
<b>LENGTH</b>	26.15m

The external courtyard creates views from one part of the house into another, rendering different layers of transparency and creating a sense of spaciousness.



## THE WAY HOME



## OLEA HOUSE



## A TIMELESS PIECE OF CONTEMPORARY ARCHITECTURE

Olea House is an interpretation of the modern villa style residences seen throughout the Mediterranean, embracing local materiality, clean lines and the use of few elements. With a thoughtful linear design and open, flowing spaces, Olea House offers a calming and inviting environment.

Designed with finesse and functionality, the home features a palette of evocative and tactile materials that are inherently low maintenance and will age gracefully.



## A SANCTUARY FOR MODERN FAMILY LIFE

Embracing a sophisticated palette of limestone, render, and natural timbers, Olea House is a timeless and engaging piece of contemporary architecture, offering a sanctuary for modern family life.

Externally, a sophisticated palette of random dry-stacked limestone, render, and natural timbers, creates a timeless and engaging piece of contemporary architecture.

