

A large, stylized letter 'K' composed of three thick, parallel brown lines. The vertical stem is on the left, and the two diagonal arms extend from the top to the bottom right. The lines are closely spaced, creating a sense of depth and movement.

CONNECTING
PEOPLE
WITH
PLACES



WELCOME TO CALIFORNIA HOUSE

California House is a unique combination of functionality and style.

A re-interpretation of the timeless mid-century modern style of architecture, emphasizing light-filled, open floor plans, with the intention of opening up interior spaces and bringing the outdoors in.

Each space is designed with purpose, using walls and screens to create areas that are at once separate and connected. A celebration of simplicity, elegance and versatility.

The entry way is solid and private. Upon entering the home the interior becomes increasingly transparent, culminating at the casual living areas as they open up to landscaped courtyards and terraces. This sequence of experiences maintains the privacy of the home toward the street, creates an enjoyable experience moving through the spaces and rewards the viewer with delightful vistas throughout.

Randomly stacked walls of Limestone, Blackbutt timbers and extensive cabinetry feature throughout, adding warmth and cohesion and creating truly elegant spaces both inside and outside of the home.

timeless
MID-CENTURY
MODERN style



CALIFORNIA HOUSE SPECIFICATIONS

EXTERIOR

Stone	Solid Limestone random stacked
Walls	Fine Grain Render
Roofing	Colorbond
Gutters	California custom
Windows	Merbau & Western Red Cedar
Garage Door	Western Red Cedar California Batten

OUTDOOR

Fire	Rinnai Luminaire
Decking	Blackbutt
Terrace	Rectified Natural Glazed Porcelain
Front	Natural Sawn Bluestone

INTERIOR

Ceiling heights	Entrance 3310mm, Generally 3010mm
Feature	Light pelmets entrance, media, master bed
Cabinetry	Blackbutt and Two Pack Lacquer
Paints	Haymes Ultra Premium

DOORS

Front entrance	Western Red Cedar California Batten
Media room	Western Red Cedar full glass
Internal	Solid core gloss finish

KITCHEN

Cabinets	Two Pack Gloss and Blackbutt Veneer
Mixer	Tink D-B Black
Benchtops	Caesarstone
Island	Caesarstone 100mm custom
Appliances	Miele

BATHROOMS

Cabinets	Blackbutt veneer
Benchtops	Caesarstone 40mm
Tapware	Grohe
Basins	Villeroy & Boch
Bath	Elinea
Tiles	Natural Glazed Porcelain Rectified Ceramic

FLOORS

Timber	Blackbutt Matt Finish
Tiles	Natural Glazed Porcelain

ROBES

Master	Two Pack Gloss and Blackbutt Veneer
Bedroom 2 & 3	Warm White Glass

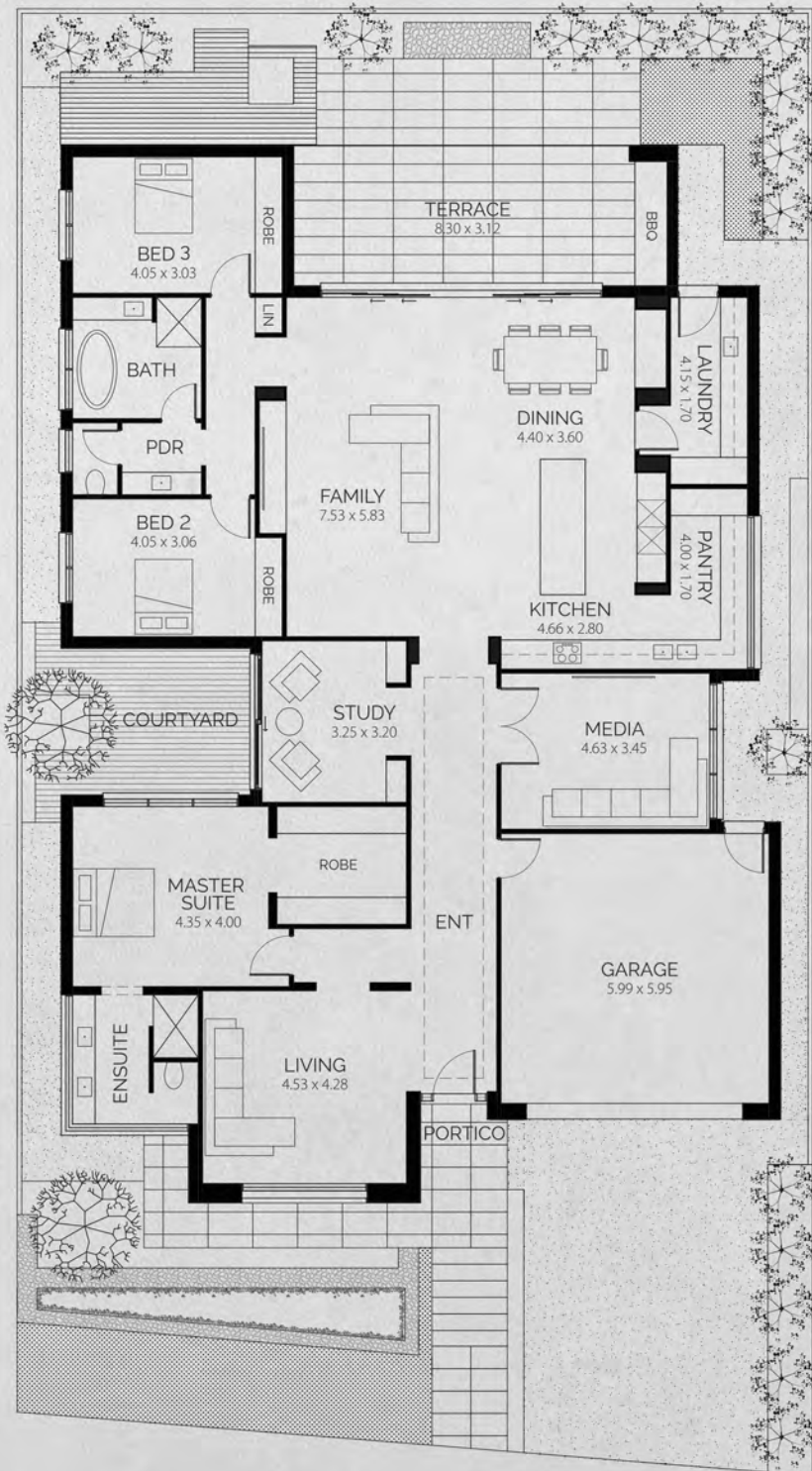
LIGHTING

Feature	LED strip lighting entrance, media, master bed
Pendants	Bocci, Felix, Casa, Castore
Throughout	LED, natural light

ELECTRICAL

Zen Fittings

CALIFORNIA HOUSE FLOORPLAN



Living	258 m ²
Garage	40 m ²
Outdoor Living	27 m ²
Portico	9 m ²
TOTAL	334 m²
WIDTH	15.95 m²
DEPTH	23.44 m²

LARES (PRONOUNCED LAH-REZ) IS THE ANCIENT ROMAN GOD OF FAMILY AND HOUSEHOLD

We thought it appropriate, given that our role is to look after yourself and your investment respectfully and carefully.

At Lares, we believe your home should be a reflection of everything you love, but all of those elements must be incorporated in a way that makes sense.

Intelligent, practical use of space. Natural light. Each room and every detail flowing together. Materials that coordinate seamlessly. A home that seems like it belongs.

Everything we do is inspired by design, shaped by a full understanding of our clients' needs, their ideas and the bigger picture of their lives.

Our mission is to make great design accessible, creating unique homes of real style and enduring value.

CALIFORNIA HOUSE

568 FERGUSON AVE
BLACKWOOD PARK

HEAD OFFICE

45 KING WILLIAM RD,
UNLEY SA 5061

(08) 8274 1360

LARESHOMES.COM.AU

